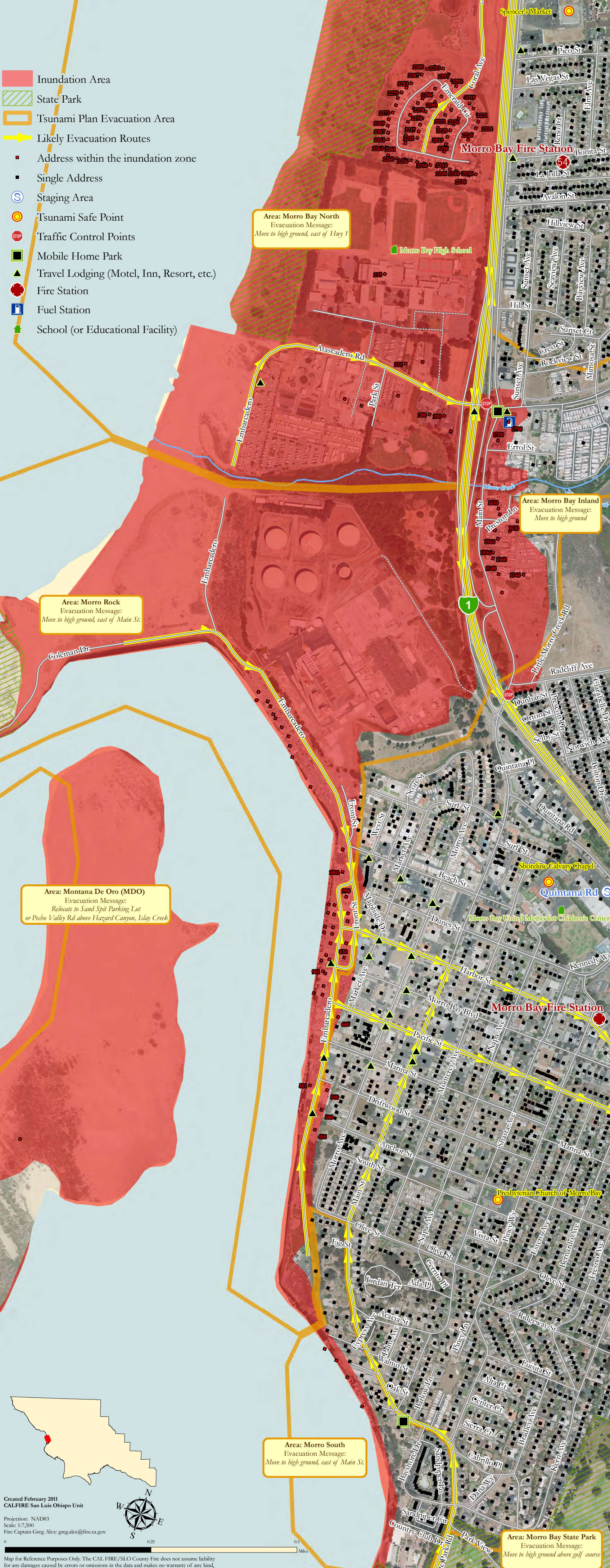


Central Morro Bay

Northern Morro Bay is expected to suffer relatively heavily in a major tsunami, due to the low elevation in the neighborhoods off of Sandwood Ave. and the area around Cloisters Community Park. Additionally the State Park campgrounds located off of Yerba Buena St. are likely to be inundated.



- Inundation Area
- State Park
- Tsunami Plan Evacuation Area
- Likely Evacuation Routes
- Address within the inundation zone
- Single Address
- Staging Area
- Tsunami Safe Point
- Traffic Control Points
- Mobile Home Park
- Travel Lodging (Motel, Inn, Resort, etc.)
- Fire Station
- Fuel Station
- School (or Educational Facility)

Area: Morro Bay North
Evacuation Message:
Move to high ground, east of Hwy 1

Area: Morro Bay Inland
Evacuation Message:
Move to high ground

Area: Morro Rock
Evacuation Message:
Move to high ground, east of Main St.

Area: Montana De Oro (MDO)
Evacuation Message:
*Relocate to Sand Spit Parking Lot
or Pecho Valley Rd above Hazard Canyon, Islay Creek*

Area: Morro South
Evacuation Message:
Move to high ground, east of Main St.

Area: Morro Bay State Park
Evacuation Message:
Move to high ground above golf course

Created February 2011
CALFIRE San Luis Obispo Unit

Projection: NAD83
Scale: 1:7,500
Fire Captain Greg Alex: gregalex@fire.ca.gov

Map for Reference Purposes Only. The CAL FIRE/SLO County Fire does not assume liability for any damages caused by errors or omissions in the data and makes no warranty of any kind, express or implied, that these data are accurate and reliable.